

CERTIFIED LAND CORNER RECORDATION

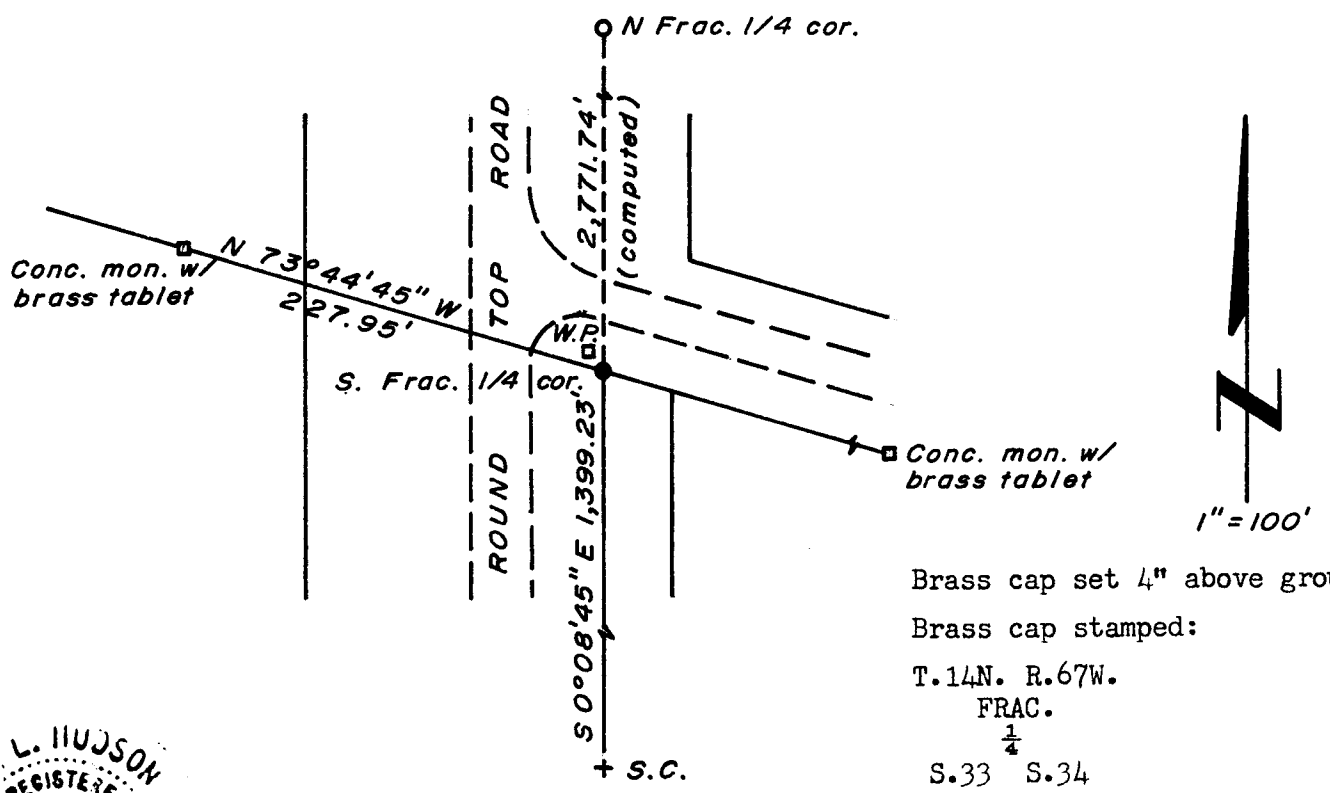
DESCRIPTION OF CORNER EVIDENCE FOUND, AND ORIGINAL RECORD (if known)

LOCATION No monument found, corner position re-established by intersection per sketch shown hereon.
 S. Frac. $\frac{1}{4}$
 S.33 S.34
 T.14N., R.67W.
 6thP.M.

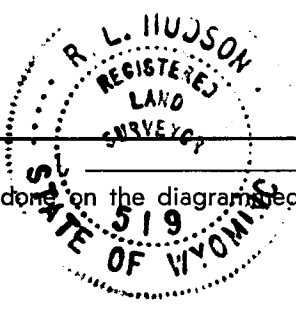
DESCRIPTION OF MONUMENT AND ACCESSORIES ESTABLISHED TO PERPETUATE THE ORIGINAL LOCATION OF THIS CORNER:

At the corner: Set a $1\frac{1}{2}$ " dia. x 30" long (concrete-filled) iron pipe with brass cap.
 Accessories: Set a 4" x 4" redwood post with aluminum sign, 2 feet NW of corner monument.

SKETCH, WITH COURSE AND DISTANCE TO ADJACENT CORNER IF DETERMINED IN THIS SURVEY.
 (May Sketch or Paste Reproduction on Reverse Side.)



Brass cap set 4" above ground.
 Brass cap stamped:
 T.14N. R.67W.
 FRAC.
 $\frac{1}{4}$
 S.33 S.34
 LS 519 1974



R.L. Hudson certify that I have carefully performed or reviewed the work done on the diagrammed corner as reported on this recordation form and approve the same.

R.L. Hudson Wyoming L.S. No. 519
 Signature of Surveyor Registration No.

STATE OF WYOMING,
 Office of Clerk and Recorder,
 County of Taramie

This "corner record" was filed for record on the 29 day of December, 1975, was noted on the cross-index plat and is assigned page No. ✓, in book No. filed.

Janet C. Whitehead
 County Official

Cross Index No. <u>XY-13</u>	T. <u>14</u>	R. <u>67</u>	Mer.
_____	T. _____	R. _____	Mer.
_____	T. _____	R. _____	Mer.
_____	T. _____	R. _____	Mer.
_____	T. _____	R. _____	Mer.
_____	T. _____	R. _____	Mer.
_____	T. _____	R. _____	Mer.

